

Evaluation of β -glucan content, viscosity, soluble dietary fiber and processing effect in grains of Ecuadorian barley genotypes

Evaluación del contenido del β -glucano, viscosidad, fibra dietética soluble y efecto del procesamiento en granos de genotipos de cebada ecuatoriana

Elena Villacrés^{1*}, Diego Campaña², Javier Garófalo², Esteban Falconi³,
María Quelal¹, Janet Matanguihan⁴, and Kevin Murphy⁴

ABSTRACT

We analyzed seventy barley accessions from Ecuador to determine the content of mixed-linkage β -glucan in seeds. Twelve of these materials showed a higher content than the population average 2.10% (w/w), and they were chosen to determine the relationship among β -glucan, viscosity and dietary fiber as well as the effect of scarification, cooking, roasting and malting on its content. In the 12 accessions, the content of β -glucan showed a high degree of correlation ($r=0.86$) with soluble dietary fiber but a low correlation with viscosity ($r=-0.17$). In most accessions, β -glucan increased in roasted or scarified grains. The roasting process increased the content by 35.51% (w/w) and scarification by 26.53% (w/w). Cooking decreased content by 39.92% and malting by 77.90%. The megazyme kit was used to determine the content of (1 \rightarrow 3) (1 \rightarrow 4)- β -D-glucan (Mixed-linkage). Results of this study show that Ecuadorian barley genotypes with a β -glucan content greater than 2.1% are suitable for human consumption and those with a lower value than 2.1% are suitable for the beer industry.

Key words: cooking, scarification, germination, malting, roasting.

RESUMEN

Setenta accesiones de cebada provenientes de Ecuador se analizaron para determinar el contenido de β -glucano en semillas. Doce de estos materiales presentaron un contenido superior a la media poblacional 2.10% (w/w) y fueron seleccionados para determinar la relación del β -glucano con la viscosidad y la fibra dietética, así como el efecto de la escarificación, cocción, tostado y malteo en su contenido. En las 12 accesiones el contenido de β -glucano presentó un alto grado de correlación ($r=0.86$) con la fibra dietética soluble pero baja correlación con la viscosidad ($r=-0.17$). En la mayoría de accesiones el β -glucano aumentó en los granos tostados o escarificados. El proceso de tostado incrementó el contenido en 35.51% (w/w) y la escarificación en 26.53% (w/w). La cocción disminuyó el contenido en 39.92% y el malteo en 77.90%. Se utilizó el kit megazyme para determinar el contenido de (1 \rightarrow 3) (1 \rightarrow 4)- β -D-glucano (Mixed-linkage). Resultados de este estudio muestran que los genotipos de cebada ecuatoriana con un contenido de β -glucano mayor a 2.10% son adecuados para la alimentación humana y aquellos con menor valor al indicado son adecuados para la industria cervecera.

Palabras clave: cocción, escarificación, germinación, malteo, tostado.

Introduction

Cereals including barley (*Hordeum vulgare* L.) are the most widely consumed food group in the world, particularly in developing countries, due to their low cost and high energy content (López *et al.*, 2008). Indigenous groups of the inter-Andean region of Ecuador have cultivated barley as far back as the third quarter of the sixteenth century. Barley was quickly accepted among the indigenous people of the Sierra and, although they had very good native crops, the barley grain was planted for use as food and for brewing

(Patiño, 1963). Most of the barley grain is used for human consumption, including traditional *machica* (toasted and ground barley flour) to make *coladas* (beverages) and *pinol* (a traditional hot drink of Ecuador made from a mixture of *machica*, panela and some sweet species), flour and baked bread, and as grain for preparing soups and desserts. In addition, barley is used in the malting industry for brewing and to a lesser extent as fodder for cattle (Villacrés, 2008).

Barley is an important source of vitamins, minerals, proteins, antioxidants and dietary fiber (Baik and Ullrich,

Received for publication: 1 January, 2019. Accepted for publication: 20 November, 2019

Doi: 10.15446/agron.colomb.v37n3.77101

¹ Departamento de Nutrición y Calidad, Estación Experimental Santa Catalina, INIAP, Mejía (Ecuador).

² Programa de Cereales, Estación Experimental Santa Catalina, INIAP, Mejía (Ecuador).

³ Programa de Cereales, Estación Experimental Santa Catalina, INIAP, Mejía (Ecuador) (until January 2016).

⁴ Sustainable Seed Systems Lab, Department of Crop and Soil Sciences, Washington State University, Pullman, WA (USA).

* Corresponding author: elena.villacres@iniap.gob.ec



2008; Havrlentová *et al.*, 2011). Dietary fibers in cereals are complex carbohydrates with ten or more monomeric units. These fibers are cellulose, hemicellulose, pectin, and β -glucans, among other compounds, and their structural differences determine their physical, chemical and physiological properties (FAO, 2010). β -glucans constitute approximately 75% of the cell wall of the endosperm of the barley grain (Sarwar *et al.*, 2013). The structure of β -glucan has a significant impact on human health, specifically its effect of lowering total cholesterol and reducing the risk of cardiovascular diseases (Havrlentová *et al.*, 2011). β -glucan has been shown to reduce postprandial glucose by increasing the viscosity in the upper digestive tract and providing a feeling of satiety sooner. A balanced diet rich in dietary fiber provides immense benefits to cardiovascular health, reducing between 10-20% the low-density lipoproteins (LDL). In addition, the rheological properties of β -glucans have promoted dietary fiber incorporation into different food with the aim of improving the stability, texture and shelf life of food products (Wood, 2007; Alminger and Eklund-Jonsson, 2008; Regand *et al.*, 2011; Pizarro *et al.*, 2014). The objectives of this study were to measure the β -glucan content of accessions in the seeds of Ecuadorian elite barley collection of the Instituto Nacional de Investigaciones Agropecuarias (INIAP), guide the use of accessions, establish the relationship among β -glucan, viscosity and dietary fiber and determine the effect of several industrial processes on β -glucan content.

Materials and methods

Plant material and raw sample processing

This research was conducted at the Santa Catalina Research Station in the laboratories of the Nutrition and Quality Department of INIAP, Ecuador. Initial characterizations were based on the β -glucan content of seventy barley accessions from elite lines and varieties of yield trials grown in 2017 at Santa Catalina Research Station. A complete block design was applied with three replicates. One sample of each repetition was taken for the analysis (Supplementary material 1) for a total of 70 materials. The grains were ground in an analytical mill (Retsch Zn 200[®], Hann, Germany) with a 42-mesh sieve (355 μ m) to obtain a homogeneous powder. To express the results on a dry basis, the moisture content of the flour was determined by weight difference drying.

β -glucan analysis

The Megazyme kit (Megazyme International, Ireland) was used specifically for the mixed-linkage (1 \rightarrow 3) (1 \rightarrow 4)- β -D-glucan assay. This enzyme assay allows for the direct analysis of β -glucan in raw and cooked flour slurries in which

the fine particles are suspended and hydrated in a buffer solution at pH 6.5 (Doehlert *et al.*, 1997). The suspension was incubated with a lichenase enzyme to depolymerize into tri-, tetra-, and higher degree oligosaccharides, which were then hydrolyzed to glucose using β -D-glucosidase. The D-glucose produced was quantified using the reagent glucose/oxidase/peroxidase (Mcclear and Glennie-Holmes, 1985). Three replicates from each sample were analyzed in a completely randomized design (CRD) using ANOVA with the statistical software InfoStat (Di Rienzo *et al.*, 2015). The LSD (0.05) test was used to perform means separation.

Viscosity determination

Viscosity was determined using a Cannon Frensky glass capillary viscometer following the method by Alvarado and Aguilera (2001).

Soluble dietary fiber quantification

The soluble dietary fiber was quantified using a modified Method 991.42 and Method 993.19 of AOAC (AOAC, 1995). The modification consisted in the dispersion of the sample in a pH 7.4 phosphate buffer and the addition of bile and pancreatic enzymes. An ANOVA was conducted to analyze the data which was organized under a completely randomized design (CRD) using InfoStat (Di Rienzo *et al.*, 2015). An LSD test (0.05) was applied to conduct means separation. Twelve accessions with a β -glucan content greater than 2.48 were selected for further assays to determine viscosity, soluble dietary fiber, and the effect of four industrial processes on β -glucan content.

Effect of processing on β -glucan content of grain

Twelve barley accessions with high β -glucan content in the initial tests were further analyzed to determine the effect on the β -glucan content of four different industrial food processes listed here: scarification, roasting, cooking, and malting. One kilogram of grain was scarified in a Strong-Scott 07810 abrasive system (Strong-Scott, Minnesota, USA) for 1 min. A second set of grains (1 kg) was roasted in a Barber Colman, 471 P model oven (Rockford, Illinois, USA) at 120°C for 10 min at a speed of 10 rpm. A third set of grains (1 kg) was cooked in an open pot using an electric stovetop at 91°C for 40 min, maintaining a grain:water ratio of 1:3. At the end of the set time, the cooking water was removed and the grain was dried in an oven (Memmert, Schwabach, Germany) at 60°C for 5 h. A fourth set of grains (1 kg) was malted, a process which includes soaking the grains in water at 16°C for 12 h, then draining the water and allowing the grains to germinate in a Barber-Colman oven (Rockford, Illinois, USA) at 90% humidity at 16°C for 72 h. At this point in the malting process, the

grains were dried in a Barber-Colman dryer to stop the germination process. After processing, the grains were milled and analyzed for β -glucan content, with the results expressed as a percentage of sample dry weight. There were three replicates per treatment, and the data were analyzed in a completely randomized design (CRD) with factorial structure (AxB) using InfoStat (Di Rienzo *et al.*, 2015). An LSD (0.05) test was conducted for the means separation of significant factors.

Results and discussion

β -glucan content in seventy accessions of raw barley

Barley accessions showed significant variability in β -glucan content with mean values from 0.38% to 3.74% (w/w) (Supplementary material 1). Twenty-eight of the accessions had a β -glucan content which ranged from 1.82% to 2.30% (w/w) and 86% of the evaluated accessions had β -glucan content below 2.78% (Fig. 1). The accessions with a β -glucan content lower than 2.10% (w/w) have the potential to be used in the brewing industry and in the animal feed industry for monogastric animals. In studies with chickens and rats, the main deleterious component of barley grain is the hydrocolloidal β -D-glucan. Probably because of the increase in the viscosity of the intestinal contents this causes poor performance for chicks (Griffey *et al.*, 2010). β -glucans decreases the activity of endogenous enzymes, alters intestinal morphology and modifies microflora composition and activity, reducing nutrient digestion and absorption and increasing the susceptibility to disease (Jacob and Pescatore, 2014). The β -glucan contents of the remaining 32 cultivars and accessions were higher than 2.10% (w/w). Those in the range of 2% - 4% (w/w) can be used for animal feed, while those with β -glucan content higher than 3% can be used for human consumption, either consumed directly as cooked or roasted grain or processed as ingredients for different food products. Barley accessions with high β -glucan content can also be used as raw material for obtaining soluble dietary fiber (SDF) to enrich different foods. Barley bran, which is rich in β -glucan, can be incorporated into oriental noodles and pasta products. Consumption of cereal fiber, such as that from barley, has been shown to have an effect on cardiovascular health by reducing low-density lipoprotein (LDL) cholesterol by about 10-20%. In addition, cereal fiber helps to reduce blood glucose levels and provides a greater sense of satiety (Wood, 2007).

Based on the low β -glucan content, the following varieties are used as checks for malted barley accessions: Metcalfe, Scarlett, Clipper and Harrington. According to this,

accessions with β -glucan content of 2.10% (w/w) or lower are appropriate for the brewing industry, since high levels of β -glucan in a malt means incomplete cell wall degradation, diminished mobilization of starch and proteins for hydrolysis, and lower malt extract values, hence, less available nutrients for fermentation during brewing. Moreover, β -glucans, in association with polyphenols, proteins and other polysaccharides, can be components of chill hazes, which form during beer storage and give the first visual impression to the consumer of beer quality (Jadhav *et al.*, 1998). The amount and molecular weight of β -glucans in malt affects the viscosity of must and beer. Barley β -glucans also negatively influence turbidity in beer (Speers *et al.*, 2005).

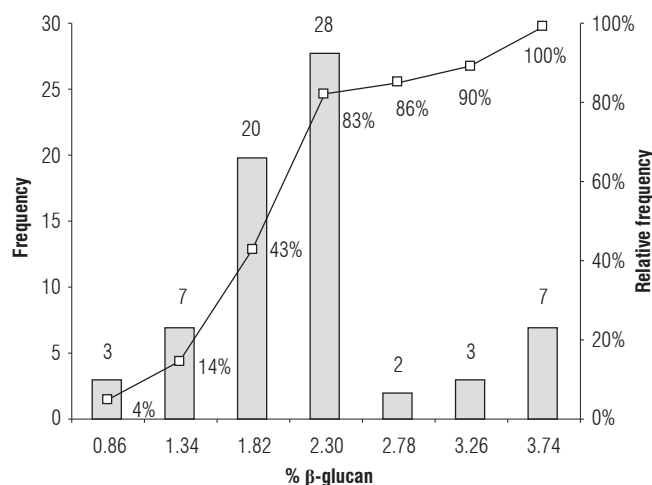


FIGURE 1. Histogram of frequencies of β -glucan percentage in 70 barley accessions.

There were no significant differences when hulled barley accessions were compared to hulless barley accessions for β -glucan content. No statistical differences were found for β -glucan content in the 27 two-row accessions with relation to the 43 six-row accessions with mean values of 2.0% and 1.9% (w/w), respectively. The barley accessions with the highest β -glucan content were INIAP-Guaranga and barley breeding lines CD-09-009 and CM-09-007 with β -glucan contents of 3.74% (w/w), 3.72% (w/w) and 3.63% (w/w), respectively.

β -glucan, viscosity and soluble dietary fiber in selected barley cultivars

The twelve accessions with the highest β -glucan content were selected for further assays to determine viscosity, soluble dietary fiber, and the effect of four industrial processes on β -glucan content.

The correlation coefficient showed a low dependence of the β -glucan content on viscosity (Fig. 2), suggesting that

in addition to β -glucan, viscosity is also affected by other components. These results are similar to those reported by Knutsen and Holtekjølén (2007), who analyzed 16 barley cultivars from Norway, Canada and Denmark and did not find significant differences in the β -glucan content. Their results confirm that β -glucan is located mainly in the aleurone layer surrounding the endosperm, rather than in the grain husk (Knutsen and Holtekjølén, 2007). β -glucan content is influenced by genotypic and environmental factors (Doehlert *et al.*, 1997; Jadhav *et al.*, 1998), though the genetic background of barley is considered more important than environmental conditions as a determinant of the final β -glucan content of the grain (Doehlert *et al.*, 1997). Both hulled and hullless (naked) barley have a higher percentage of Fe, P, Zn and K in their grains compared to the other cereals commonly grown in Ecuador. However, the mineral concentration in hulled barley decreases by approximately 32% after the pearling process (Villacrés and Rivadeneira, 2005), suggesting that an emphasis on breeding hullless or naked types will be beneficial to the overall nutrition of people who consume barley.

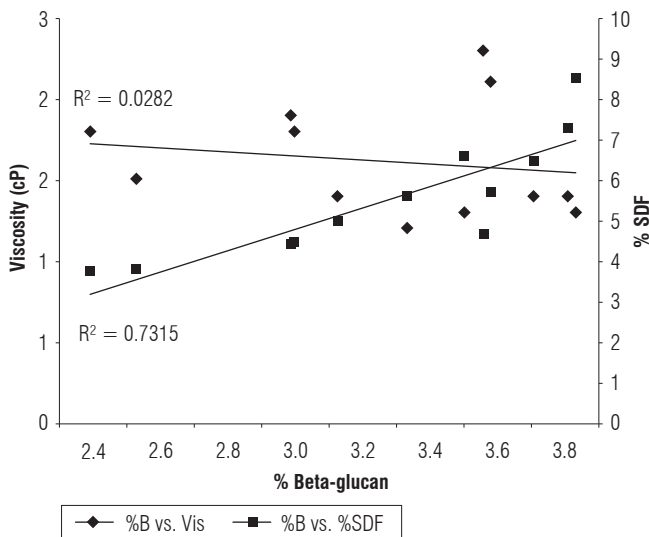


FIGURE 2. β -glucan viscosity and soluble dietary fiber percentages in barley cultivars.

The correlation coefficient demonstrated a lack of a positive relationship between the β -glucan content and viscosity. Barley accessions with β -glucan content higher than 2.10% showed a high degree of correlation with soluble dietary fiber (SDF) concentration, suggesting that in addition to β -glucan, viscosity is also affected by other components. These can include arabinoxylans or pentosans which are not hydrolysed by β -glucanases (Fig. 2). Other authors indicate that water extracts of ground barley contain gums with low-molecular weight (about 200,000 D) β -D-glucans

and pentosans (Prentice, 2000). Several studies indicate that the molecular structure and structural organization of β -glucan and arabinoxylan in oats and barley are important in determining their physical properties such as water solubility, viscosity (gelation) and digestibility (Lazaridou and Biliaderis, 2007; Izydorczyk *et al.*, 2008; Skendi and Biliaderis, 2016). This correspondence is due to the fact that β -glucans are the major components of the SDF in barley (Yoon *et al.*, 1995; Bunzel *et al.*, 2001; Mudgil and Barak, 2013).

Effect of processing on β -glucan content of grain

The aqueous cooking of barley grains caused a decrease of 39.9% in the β -glucan content of the 12 accessions evaluated compared to the β -glucan content of raw grain (Tab. 4). The accessions that had the greatest reduction compared to the raw grain were CH-09-011, CD-09-013, and CD-09-008, with a decrease of 58.5, 55.4 and 52.2%, respectively (Fig. 2). This could be attributed to the solubility of β -glucan in hot water. In contrast, the grain roasting process increased β -glucan content by 35.5% compared to the raw grain (Tab. 4). The accessions that showed a significant increase in β -glucan content with the roasting process were CD-09-013, CM-09-007 and CH-09-011, with a 60.9, 55.6 and 54.8% increase compared to the raw grain (Fig. 2). Roasting involves heat and mechanical shearing which may have affected the molecular and structural characteristics of β -glucans and their interaction with other barley components, thus having an impact on β -glucan content (Lazaridou and Biliaderis, 2007). The high temperatures during the roasting process may have also inhibited the activity of β -glucanases, so that β -glucan was not hydrolyzed and was present in higher concentrations (Lazaridou and Biliaderis, 2007).

In the scarified or polished grain, the β -glucan content increased by 26.5% compared to the raw grain. Three accessions (CH-09-006, INIAP-CAÑICAPA and CM-09-007) showed a significant increase in β -glucan content in relation to the raw grain, with increases of 69.23, 48.49, and 46.01% (Fig. 2). This effect could be due to the removal of the external peel adhering to the pericarp while retaining the outer cell layer where β -glucans are concentrated. Regarding this, Knutsen and Holtekjølén (2007) and Marconi *et al.* (2000) suggest that β -glucan content is not significantly affected by the polishing and scarifying process, though, in general, there could be an increase in the β -glucan content. Additionally, abrasion removes the seed coat, the aleurone and subaleurone layers, and the germ, resulting in polished grain rich in starch, β -glucans and protein (Jadhav *et al.*, 1998).

TABLE 1. Effect of industrial food processing on the β -glucan content of barley accessions.

Accession	Percentage β -glucan content of different accessions					Percentage loss or gain of β -glucans in relation to crude grain			
	Raw grain	Cooked	Roasted	Scarified	Malted	Cooked	Roasted	Scarified	Malted
CD-09-008	3.12 \pm 0.01	1.49 \pm 0.10	4.07 \pm 0.05	3.88 \pm 0.26	0.88 \pm 0.03	-52.24	30.45	24.36	-71.79
CD-09-009	3.72 \pm 0.03	1.88 \pm 0.16	4.53 \pm 0.18	4.35 \pm 0.12	1.15 \pm 0.23	-49.46	21.77	16.94	-69.09
CD-09-013	3.45 \pm 0.08	1.54 \pm 0.14	5.55 \pm 0.22	4.79 \pm 0.62	0.42 \pm 0.14	-55.36	60.87	38.84	-87.83
CH-09-006	2.60 \pm 0.02	1.84 \pm 0.18	3.73 \pm 0.04	4.40 \pm 0.08	1.09 \pm 0.18	-29.23	43.46	69.23	-58.08
CH-09-009	3.00 \pm 0.30	2.23 \pm 0.59	3.25 \pm 0.09	2.91 \pm 0.38	1.16 \pm 0.23	-25.67	8.33	-3.00	-61.33
CH-09-010	3.52 \pm 0.01	1.73 \pm 0.30	4.57 \pm 0.56	3.72 \pm 0.15	1.16 \pm 0.03	-50.85	29.83	5.68	-67.05
CH-09-011	3.01 \pm 0.41	1.25 \pm 0.05	4.66 \pm 0.38	4.15 \pm 0.74	0.62 \pm 0.49	-58.47	54.82	37.87	-79.40
CH-09-012	3.50 \pm 0.35	3.00 \pm 0.11	3.68 \pm 0.35	3.03 \pm 0.22	0.22 \pm 0.10	-14.29	5.14	-13.43	-93.71
CH-09-014	2.48 \pm 0.01	1.29 \pm 0.16	3.51 \pm 0.11	3.41 \pm 0.38	0.27 \pm 0.14	-47.98	41.53	37.50	-89.11
CM-09-007	3.63 \pm 0.01	2.87 \pm 0.18	5.65 \pm 0.50	5.30 \pm 0.20	0.75 \pm 0.11	-20.94	55.65	46.01	-79.34
INIAP CAÑICAPA	3.30 \pm 0.07	2.28 \pm 0.02	4.42 \pm 0.21	4.90 \pm 0.18	0.37 \pm 0.13	-30.91	33.94	48.48	-88.79
INIAP GUARANGA	3.74 \pm 0.02	2.11 \pm 0.37	5.25 \pm 0.10	4.11 \pm 0.07	0.40 \pm 0.08	-43.58	40.37	9.89	-89.30
Mean \pm SD	3.26 \pm 0.42	1.96 \pm 0.57	4.75 \pm 1.51	4.15 \pm 0.80	0.71 \pm 0.30	-39.92	35.51	26.53	-77.90

The malting process decreased the β -glucan content by as much as 78.3% compared to the raw grain. The accessions that showed a greater reduction in β -glucan content due to the malting process were CH-09-012, INIAP-GUARANGA, and CH-09-014, with a decrease of 93.71, 89.30 and 89.11% (Tab. 4) (Fig. 2), which can be attributed to the enzymatic activity during grain germination. The degradation of endosperm cell walls and the subsequent change in β -glucan levels during malting are largely related to the activity of β -glucanases, which depolymerize β -glucans and influence their reduction during the malting process (Zhang *et al.*, 2002). Therefore, the content of β -glucan in the malted grain results from the initial content of each accession and the effect of the β -glucanases. However, the two characteristics have independent genetic effects.

Conclusions

An analysis of β -glucan in 70 barley accessions showed variations between 0.38% and 3.74% (w/w). Twelve of these materials had a β -glucan content greater than 2.10% (w/w) and were subjected to four industrial processes to determine their effect on the β -glucan content. This compound was increased in the grain by roasting and scarification, while cooking and malting caused a decrease in β -glucan content, helping to guide the use of the grain. Thus, accessions with a content higher than 3% can be used for human consumption, either consumed directly as cooked or roasted grain, or processed as ingredients for various food products. Accessions with a content of less than 2.10%

have the potential to be used in the brewing and animal feed for monogastric animal industries.

Literature cited

- Alminger, M. and C. Eklund-Jonsson, 2008. Whole-grain cereal products based on a high-fibre barley or oat genotype lower post-prandial glucose and insulin responses in healthy humans. *Eur. J. Nutr.* 47, 294. Doi: 10.1007/s00394-008-0724-9
- Alvarado, J. de D. and J.M. Aguilera, 2001. Métodos para medir propiedades físicas en industrias de alimentos. Editorial Acribia, Zaragoza, Spain.
- AOAC. 1995. Official methods of analysis of the association of official analytical chemists international. Method 991.43. Arlington, Virginia, USA.
- Baik, B.K. and S.E. Ullrich. 2008. Barley for food: characteristics, improvement, and renewed interest. *J. Cereal Sci.* 48, 233-242. Doi: 10.1016/j.jcs.2008.02.002
- Bunzel, M., J. Ralph, J.M. Marita, R.D. Hatfield, and H. Steinhart. 2001. Diferulates as structural components in soluble and insoluble cereal dietary fibre. *J. Sci. Food Agric.* 81, 653-660. Doi: 10.1002/jsfa.861
- Di Rienzo, J., F. Casanoves, M.G. Balzarini, L. González, A. Julio, M. Tablada, and C.W. Robledo. 2015. InfoStat. InfoStat Group, Facultad de Ciencias Agropecuarias, Universidad Nacional de Córdoba, Argentina.
- Doehlert, D.C., D. Zhang, M.S. McMullen, and W.R. Moore. 1997. Estimation of mixed linkage beta-glucan concentration in oat and barley from viscosity of whole grain flour slurry. *Crop Sci.* 37, 235-238.
- FAO. 2010. Codex Alimentarius. Guidelines on nutrition labelling CA/GL 2-1985 as last amended 2010. Rome.

- Griffey, C., W. Brooks, M. Kurantz, W. Thomason, F. Taylor, D. Obert, R. Moreau, R. Flores, M. Sohn, and K. Hicks. 2010. Grain composition of Virginia winter barley and implications for use in feed, food, and biofuels production. *J. Cereal Sci.* 51, 41-49. Doi: 10.1016/j.jcs.2009.09.004
- Havrilentová, M., Z. Petrušáková, A. Burgárová, F. Gago, A. Hlinková, and E. Šturdík. 2011. Cereal β -glucans and their significance for the preparation of functional foods: a review. *Czech J. Food Sci.* 29, 1-4.
- Izydorczyk, M.S., T.L. Chornick, F.G. Paulley, N.M. Edwards, and J.E. Dexter. 2008. Physicochemical properties of hull-less barley fibre-rich fractions varying in particle size and their potential as functional ingredients in two-layer flat bread. *Food Chem.* 108, 561-570. Doi: 10.1016/j.foodchem.2007.11.012
- Jacob, J.P. and A.J. Pescatore. 2014. Barley β -glucan in poultry diets. *Ann. Transl. Med.* Doi: 10.3978/j.issn.2305-5839.2014.01.02
- Jadhav, S.J., S.E. Lutz, V.M. Ghorpade, and D.K. Salunkhe. 1998. Barley: Chemistry and value-added processing. *Crit. Rev. Food Sci.* 38, 123-171. Doi: 10.1080/10408699891274183
- Knutsen, S.H. and A.K. Holtekljolen. 2007. Preparation and analysis of dietary fibre constituents in whole grain from hulled and hull-less barley. *Food Chem.* 102, 707-715. Doi: 10.1016/j.foodchem.2006.06.006
- Lazaridou, A. and C.G. Biliaderis. 2007. Molecular aspects of cereal β -glucan functionality: physical properties, technological applications and physiological effects. *J. Cereal Sci.* 46, 101-118. Doi: 10.1016/j.jcs.2007.05.003
- López, E.C., J.J. Ordaz, T.H. Madrigal, J.A. Morga, and R.B. Hernández. 2008. Composición química de cebadas cultivadas bajo diferentes condiciones de labranza en tres localidades del estado de Hidalgo, México. *Bioagro* 20, 201-208.
- Marconi, E., M. Graziano, and R. Cubadda. 2000. Composition and utilization of barley pearling by-products for making functional pastas rich in dietary fiber and β -glucans. *Cereal Chem.* 77, 133-139. Doi: 10.1094/CCHEM.2000.77.2.133
- Mcclear, B.V. and M. Glennie-Holmes. 1985. Enzymic quantification of (1 \rightarrow 3) (1 \rightarrow 4)- β -D-glucan in barley and malt. *J.I. Brewing* 91, 285-295. Doi: 10.1002/j.2050-0416.1985.tb04345.x
- Mudgil, D. and S. Barak. 2013. Composition, properties and health benefits of indigestible carbohydrate polymers as dietary fiber: a review. *Int. J. Biol. Macromol.* 61, 1-6. Doi: 10.1016/j.ijbiomac.2013.06.044
- Patiño, V.M. 1963. Plantas cultivadas y animales domésticos en América equinoccial I: frutales. Imprenta departamental, Cali, Colombia
- Pizarro, S., A.M. Ronco, and M. Gotteland. 2014. β -glucanos: ¿qué tipos existen y cuáles son sus beneficios en la salud? *Rev. Chil. Nutr.* 41, 439-446. Doi: 10.4067/S0717-75182014000400014
- Prentice, N. 2000. Brewers' spent grain in high fiber muffins. *Baker's Digest* 52(5), 22-23.
- Regand, A., Z. Chowdhury, S.M. Tosh, T.M. Wolever, and P. Wood. 2011. The molecular weight, solubility and viscosity of oat beta-glucan affect human glycemic response by modifying starch digestibility. *Food Chem.* 129, 297-304. Doi: 10.1016/j.foodchem.2011.04.053
- Sarwar, M.H., M.F. Sarwar, M. Sarwar, N.A. Qadri, and S. Moghal. 2013. The importance of cereals (Poaceae: Gramineae) nutrition in human health: a review. *J. Cereals Oilseeds* 4, 32-35. Doi: 10.5897/JCO12.023
- Skendi, A. and C.G. Biliaderis. 2016. Gelation of wheat arabinoxylans in the presence of Cu⁺² and in aqueous mixtures with cereal β -glucans. *Food Chem.* 203, 267-275. Doi: 10.1016/j.foodchem.2016.02.063
- Speers, R.A., Y.L. Jin, A.T. Paulson, and R.J. Stewart. 2005. Los Beta-Glucanos de cebada y su degradación durante el malteado y la fabricación de cerveza. *Cerveza y Malta* 168, 23-35.
- Villacrés, E. 2008. La cebada: un cereal nutritivo (50 recetas para preparar). Editorial Grafistas, Quito.
- Villacrés, E. and M. Rivadeneira. 2005. Barley in Ecuador: Production, grain quality for consumption, and perspectives for improvement. pp. 127-137. In: Grando, S. and H. Gómez (eds.). *Food barley importance, uses local knowledge*. ICARDA, Aleppo, Siria.
- Wood, P.J. 2007. Cereal β -glucans in diet and health. *J. Cereal Sci.* 46, 230-238. Doi: 10.1016/j.jcs.2007.06.012
- Yoon, S.H., P.T. Berglund, and C.E. Fastnaught. 1995. Evaluation of selected barley cultivars and their fractions for β -glucan enrichment and viscosity. *Cereal Chem.* 72, 187-190.
- Zhang, G., W. Junmei, and C. Jinxin. 2002. Analysis of β -glucan content in barley cultivars from different locations of China. *Food Chem.* 79, 251-254. Doi: 10.1016/S0308-8146(02)00127-9

SUPPLEMENTARY MATERIAL 1. Ecuadorian elite barley collection used in the study.

Nº	Code Accession	Pedigree	% β -glucan
1	INIAP GUARANGA*	JAZMIN/CARDO//TOCTE	3.74 \pm 0.02
2	CD-09-009**	CAMELOT/ALELI	3.72 \pm 0.04
3	CM-09-007**	LEGACY*2/5ATACO/BERMEJO/HIGO/3/CLN-B/80.5138//GLORIA-BAR/COPAL/4/CHEVRON-BAR	3.63 \pm 0.01
4	CH-09-010**	OPTIMA-BAR//BLLU//LA MOLINA 94	3.52 \pm 0.01
5	CH-09-012**	M94060003	3.50 \pm 0.35
6	CD-09-013**	MSEL/AZAF	3.45 \pm 0.08
7	INIAP CAÑICAPA*	INIAP-SHYRI 89/3/GAL/PI6384//ESC-II-72-607-1E-1E-5E	3.30 \pm 0.07
8	CD-09-008**	INIAP SHYRI 89/GRIT 43	3.12 \pm 0.01
9	CH-09-011**	MJA/BRB2//QUINA/5/DC-B/SEN/3/AGAVE/YANALA//TUMBO/4/CEN.B/2*CALI92/6/TOCTE/3/ GAL/PI6384//ESC.II.72.607.1E.4E.5E	3.01 \pm 0.41
10	CH-09-009**	CIRUELO	3.00 \pm 0.30
11	CH-09-006**	MJA/BRB2//QUINA/5/DC-B/SEN/3/AGAVE YANALA//TUMBO/4/CEN.B*CALI92/6/TOCTE/3/ GAL/PI6384//ESC.II.72.607.1E.4E.5E	2.60 \pm 0.02
12	CH-09-014**	PFC9202/LA MOLINA94	2.48 \pm 0.01
13	CH-09-016**	TOCTE/JUGL//SUCHE	2.23 \pm 0.18
14	CN-09-003**	H.V-III.37.E1-0E-0E-0E	2.23 \pm 0.22
15	CD-09-012**	INIAP SHYRI 89/GRIT 8	2.22 \pm 0.12
16	CH-09-013**	ZIGZIG/BLLUP//PETUNIA1	2.21 \pm 0.10
17	CD-09-002**	ANDESS297.91/BSRD1.72	2.17 \pm 0.22
18	CN-09-011**	H.V-III.37.E1-0E-0E-0E	2.17 \pm 0.02
19	CN-09-005**	H.V-IV.65.E1-0E-0E-0E	2.15 \pm 0.09
20	CN-09-016**	H.V-I.20.E1-0E-0E-0E	2.14 \pm 0.06
21	CD-09-004**	INIAP SHYRI 89/GRIT 9	2.12 \pm 0.12
22	CD-09-006**	INIAP SHYRI 89/GRIT 3	2.11 \pm 0.12
23	CH-09-001**	PETUNIA 2/3/GAL/PI6384//ESC.II.72.607.1E.4E.5E	2.11 \pm 0.13
24	CH-09-008**	MJA/BRB2//QUINA/5/DC-B/SEN/3/AGAVE YANALA//TUMBO/4/CEN.B*CALI92/6/TOCTE/3/ GAL/PI6384//ESC.II.72.607.1E.4E.5E CBSS99M00383D-8B-1Y-2B-1Y-0B-0E-0E	2.10 \pm 0.08
25	CLIPPER***	PROCTOR/PRIOR A	2.06 \pm 0.74
26	RITA PELADA** *	Variedad Criolla	2.05 \pm 0.18
27	CN-09-015**	H.V-I.11.E2-0E-0E-0E	2.00 \pm 0.30
28	CH-09-017**	TOCTE/JANE//TOCTE/SUCHE	1.98 \pm 0.12
29	CN-09-004**	H.V-IV.52.E4-0E-0E-0E	1.97 \pm 0.27
30	CD-09-007**	INIAP SHYRI 89/GRIT 19	1.95 \pm 0.09
31	CN-09-007**	H.V-1.2.E1-0E-0E-0E	1.95 \pm 0.04
32	CH-09-005**	ATAH92/GOB//F101.78/3/ARUPO/K8755//MORA	1.93 \pm 0.08
33	CH-09-015**	MN BRITE/LEGACY	1.92 \pm 0.16
34	CM-09-001**	CAMELOT/ALELI	1.89 \pm 0.05
35	METCALFE***	ACObow/Manley	1.89 \pm 0.12
36	CD-09-011**	INIAP SHYRI 89/GRIT 17	1.86 \pm 0.20
37	CN-09-012**	H.V-1.2.E1-0E-0E-0E	1.84 \pm 0.07
38	CN-09-009**	H.V-IV.61.E1-0E-0E-0E	1.84 \pm 0.11
39	CM-09-004**	CALI92/KASOTA/CALI92/ROBUST	1.83 \pm 0.09
40	CN-09-006**	H.V-III.37.E1-0E-0E-0E	1.83 \pm 0.14
41	CN-09-001**	H.V-I.16.E3-0E-0E-0E	1.82 \pm 0.11
42	CN-09-018**	H.V-II.31.E5-0E-0E-0E	1.81 \pm 0.12

Continue

Nº	Code Accession	Pedigree	% β -glucan
43	SCARLET***	03C0602426	1.70 \pm 0.20
44	CH-09-003**	EBC(A)/PALTON//CABUYA	1.75 \pm 0.01
45	INIAP ATAHUALPA*	SUTTER/GLORIA"S"/COMES"S" /3/PI6384/CAPUCHONA	1.74 \pm 0.78
46	CD-09-005**	INIAP SHYRI 89/GRIT 20	1.72 \pm 0.10
47	CN-09-008**	H.V-I.20.E1-0E-0E-0E	1.70 \pm 0.09
48	CD-09-001**	INIAP SHYRI 89/GRIT 7	1.68 \pm 0.30
49	CH-09-004**	QUINN/ALOE//CARDO/3/CIRU	1.68 \pm 0.05
50	CN-09-010**	H.V-III.37.E1-0E-0E-0E	1.68 \pm 0.10
51	CD-09-010**	INIAP SHYRI 89/GRIT 10	1.66 \pm 0.02
52	INIAP QUILOTOA*	LIGNEE527/4/MCU33/FZA//TIB/3/PI356456/5/LIGNEE527/F7 70077	1.59 \pm 0.20
53	INIAP PACHA*	NIAP-SHYRI 89/GRIT	1.54 \pm 0.16
54	CN-09-002**	H.V-I.16.E3-0E-0E-0E	1.54 \pm 0.13
55	CM-09-006**	STANDER-BAR/CABUYA	1.52 \pm 0.06
56	CN-09-014**	H.V-I.20.E3-0E-0E-0E	1.52 \pm 0.30
57	CH-09-002**	PETUNIA 2/3/TOCTE/TOCTE//BERROS/4/CABUYA	1.50 \pm 0.06
58	CM-09-003**	STANDER-BAR/CALI92/ROBUST	1.45 \pm 0.16
59	FRANSISCANA***	Variedad criolla	1.45 \pm 0.05
60	CH-09-007**	ENCINO/CIRU//CABUYA	1.36 \pm 0.02
61	CN-09-013**	H.V-IV.62.E1-0E-0E-0E	1.22 \pm 0.04
62	CM-09-008**	IBTA MALTERA/3/PUEBLA/CARDO/TOCTE	1.21 \pm 0.05
63	CM-09-009**	HARRINGTON	1.17 \pm 0.17
64	INIAP DORADA*	CI9650 Col. M. 1963	1.14 \pm 0.14
65	CM-09-005**	CALI92/ROBUST/PENCO/CHEVRONBAR/3/SLLO/ROBUST/QUINA	1.17 \pm 0.17
66	CM-09-002**	STANDER-BAR/IBTA MALTERA	0.97 \pm 0.05
67	CN-09-017**	H.V-IV.65.E1-0E-0E-0E	0.94 \pm 0.02
68	INIAP TERAN*	SELEC. Abyssinian 669 Col. M. 1970	0.53 \pm 0.07
69	CM-09-011**	NIOBE	0.49 \pm 0.03
70	CM-09-010**	CAMELOT	0.38 \pm 0.06

* INIAP improved varieties, ** material from ICARDA, *** local samples/brewers.